

SPE THE SPECIALIST

**November
2010**

Volume 38

Inside:

Advertisers

Index

Page 2

**President's
Remarks**

Page 3

**Membership
Corner and
Spotlight on
the Board**

Page 4

**Councilor's
Corner**

Page 8

Section MiniTec

WEDNESDAY, MARCH 30, 2010

HENNEPIN TECHNICAL COLLEGE NORTH CAMPUS

9000 BROOKLYN BLVD, BROOKLYN PARK, MN

www.hennepintech.edu • 1-800-345-4655

12:30 PM REGISTRATION 1:00 – 3:30 PM SEMINAR

The Madison Group

Failure Analysis of Plastics – Jeffrey A. Jansen

Introduction to Failure Analysis

What is a FA

Goal of a FA

Why Perform a FA

The 5 Factors Effecting Plastic Part Performance

Material

Design

Fabrication

Installation

Service Environment

Ductile to Brittle Transitions

Temperature

Strain Rate

Time

Molecular Weight

Chemical Contact

Steps in Conducting a Failure Analysis

Approach

Tests

Case Examples

Jeffrey A. Jansen is the Engineering Manager at The Madison Group, an independent plastics consulting firm. Jeff specializes in failure analysis, material identification and selection, and aging studies for thermoplastic materials. He has performed over 900 failure investigations, both for industrial clients and litigation work. Jeff is a graduate of Carroll College and the Milwaukee School of Engineering. He has authored numerous articles and an ASM handbook chapter relating to failure analysis. Jeff has also taught several seminars on plastics failure analysis, chemical effects of plastics, and basic rubber technology.

For reservations or questions, email Daniel Mishek at Danny@VistaTek.com. If you don't have access to the internet then call Daniel Mishek at 651-653-0400

EMAIL IS PREFERRED

\$20.00 Members • \$25.00 Non Members, Credit Cards now accepted.

Prepayment can be made at Section Website. To pre-register and pay, please go to www.uppermidwestspe.org/events.htm

*** PLEASE INVITE YOUR FRIENDS TO JOIN US ON MARCH 30TH ***



www.eoplastics.com

- Mold Making • Injection Molding • Over Molding
- Value Added Manufacturing • Insert Molding

19178 Industrial Blvd.
Elk River, MN 55330

763-441-6100 Ext. 132
Fax: 763-441-6452

Position Wanted - Dennis Hvam

P.O. Box 204, Red Wing, Minnesota 55066
Phone – 651-388-7309 • E-Mail dhvam@charter.net

EXPERIENCED PLASTICS PROFESSIONAL SEEKS POSITION.
Molding experience includes injection molding as molder, inspector, project manager, supervisor, purchasing manager, & plant manager. Sales experience includes, plastic raw material sales and distribution, and custom molded part and project sales of injection molded, blow molded, rotational molded, and thermoformed parts.

My desire is to stay in the industry in sales or project management.

ADVERTISING SPACE AVAILABLE

Place your ad here by contacting
SPE Section 22
Bill Priedeman: bpriedeman@aol.com



Sam McCord
CEO/Founder

3425 Sycamore Court NE
Cedar Rapids, Iowa 52402

phone: 319.378.0077
fax: 319.378.1577
cell: 319.270.4507

www.mcgbiocomposites.com
mccord@mcgbiocomposites.com



BIOCOMPOSITES LLC



Exactly your chemistry.

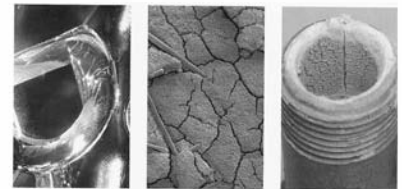
Rebecca Hoffman 800-328-5589
Marilyn Green 800-328-5589
John Wooten 800-328-5589

www.clariant.masterbatches.com



The Madison Group

Consultants for the Plastics Industry



5510 Nobel Drive, Suite 215
Madison, WI 53711 USA
Ph: (608) 231-1907
Fx: (608) 231-2694
email: info@madisongroup.com
www.madisongroup.com

Failure Analysis
Material Engineering
Processing Analysis

Put years of plastics engineering experience to work for you

ADVERTISING SPACE AVAILABLE

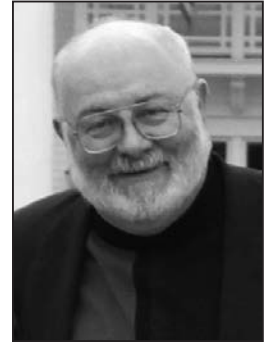
Place your ad here by contacting
SPE Section 22
Bill Priedeman: bpriedeman@aol.com

Advertisers Index

Clariant	Page 2
E & O Tool and Plastics, Inc	Page 2
Forming Solutions, Inc.	Page 11
Madison Group	Page 2
MCB Biocomposites	Page 2
NatureWorks, LLC.....	Page 11

President's Remarks

Dick Bopp



A Night of Good Fun, Good Company and Good Works

I'm not sure that you all remember Friday, January 14th. It was only a little bit ago—really in the middle of last month as I write this. But, somehow it feels like it was last year to me. Maybe it's because of some thermal shock from my vacation in Florida last week. I don't know. Anyway, as the title says, it was a night of very many good things...and I even left out the "good food." But, unlike almost every other case I can think of, sometimes one can actually have too many good things...at least that can be the case when you are constructing a title for the next issue of The SPEcialist. But, I digress. The night was that of our Section's annual award dinner held at the Chanhassen Dinner Theatre and it snowed and snowed and snowed. Still, the entire Upper Midwest SPE contingent showed up for all the fun and "goodies" including the opportunity to recognize Sean Mertes and Rolly Enderes for their outstanding contributions to our Section.

As I am sure you know, Sean is stepping down from Technical Program chair after more than 8 years service in providing our Mini/MegaTech events which have been the "meat and potatoes" of our Section's educational program. Dave Erickson thanked Sean for his outstanding service and presented him with a plaque to commemorate the occasion. We are indeed fortunate not only to have had the benefit of Sean's interesting and informative programs, but also his great example at how to make a challenging job look like it's no sweat. Thank you, Sean, for a job very well done. I look forward to continuing to work with you on the board in your new mentoring roll as Dan Mishek takes up the reigns of Technical Program Chair.

Special recognition was also deservedly given to Rolly Enderes who is our hardworking newsletter editor and our webmaster. If you haven't already done so, I'd encourage you to check out his work on our website, www.uppermidwestspe.org. Rolly's actual title should be CCO, chief communications officer, since he is responsible for putting together virtually all the communications from the board to our membership...although at times I'm sure he may feel more like the section "cat wrangler" as he cajoles us to submit our columns for the next edition before deadline. It has been my pleasure to work with Rolly over the years as he consistently publishes an outstanding--and one of the few remaining "hard copy" newsletters--in SPE. We are indeed fortunate to have his talent, expertise and "can do" attitude as we go forward for yet another year.

Both Sean and Rolly were recognized with plaques and certificates commemorating their outstanding contributions. They and their wives, Tanya and Mel, were special honored guests of the Section for the evening.

And yet, the success of a Section such as ours is truly derived from the hard work and commitment of our entire board of directors—volunteers, all. It was my pleasure to recognize each of the directors present with certificates of appreciation for their individual contributions. It has been my distinct honor to have had their support over the last two years. I look forward to our continuing work together for even better things to come going forward.

After dinner we all enjoyed a very entertaining and lively presentation of "All Shook Up."

What more is there to say? Thank you all...and Rock On!

WELCOME TO OUR NEW MEMBERS

Dan Mishek, Membership Chairman
Email: Dan@vistatek.com • Phone: (651) 653-0400



Dan Mishek

Please welcome our newest members. We are off to a great start for 2011. The SPE looks forward to adding you to this list. Now that you are a member, get involved with the SPE activities. You won't be disappointed.

<u>NEW MEMBER</u>	<u>AFFILIATION</u>	<u>LOCATION</u>	<u>NEW MEMBER</u>	<u>AFFILIATION</u>	<u>LOCATION</u>
Jeff Anderson	Sanmina-SCI	Turtle Lake, WI	Derek Coover	Raven Industries	Sioux Falls, SD
James Hughes		White Bear Lake, MN	Alex Casillas	Midwest Exchange Inc	Gurnee, IL
Emmanuel Morris		Brooklyn Center, MN	Darryl Tonak		Clark, SD
Junior Gbodai		Minneapolis, MN	Jerry Janicki	FP Intl.	Thornton, IL
Rigobert Nzimi		Brooklyn Center, MN	Daniel Koughan		Eden Prairie, MN
Jerry Roemhildt		Shakopee, MN	Adam Hays	Aqua Poly Equipment, LLC	Elk River, MN
Sarada Pann		Farmington, MN	Scott Blaine	ADC	Shakopee, MN
Mario Olson		Albertville, MN	Steven Gieseke	Donaldson Company Inc	Richfield, MN
Johnny Calderon		Osseo, MN	Joni Davis	Diversified Plastics, Inc.	Brooklyn Park, MN
Dayton Ramirez		Lone Rock, WI	Mary Jo Johnson	3M Company	St. Paul, MN
Mark Smith		Woodbury, MN	Ronald Juedes		Medford, WI
Anthony Padden		Champlin, MN	Christopher Krohe		Saint Paul, MN
Jennifer Millin	UW Stout	Menomonie, WI			
Jesse Dulek	RTP Company	Winona, MN			
Timothy Vanyo	NatureWorks LLC	Minnetonka, MN			

SPOTLIGHT ON THE BOARD

by Dick Bopp

Tim Spahr, Membership Chair

For this issue of The SPEcialist it is my pleasure to present to you, Tim Spahr, a new board member and our Membership Chair. Tim has been working with thermoplastics for the past 33 years starting with Honeywell MicroSwitch in Freeport, IL in 1979 where he designed permanent magnets in thermoplastic housings for Hall Effect automotive sensors.

In 1987 Tim transferred to Honeywell's plastics processing group, also in Freeport, as a finite element analysis (FEA) analyst responsible for their mold flow programs. As luck would have it, his new job required that he carry out detailed processing studies on all the products he had designed over the previous eight years. So, he got the unique "opportunity" to learn all about the interdependence of product design and processing in an injection molding machine without even the scant satisfaction of saying "I told you so." to anyone, but that guy he saw in the mirror every morning. But, WOW! What a great learning opportunity that must have been.

In 1989, Tim accepted a position with Hoechst Celanese (now Ticona) as a Technical Service engineer responsible for structural, mold filling analysis, tech service and product seminars.

There he added to his understanding of the nuts and bolts of injection molding and picked up much valued additional experience in dealing with

the voice of the customer. He served in this position in Short Hills, NJ and Chicago before moving into highly engineered, thermoplastic technology in late 1993 when he transferred into the Polymer Composites group (now Ticona Celstran), in Winona, MN as Sr. Design Engineer.

In 1998, Tim joined Ticona's technical marketing group as a Sr. Application Development Engineer supporting industrial applications and in 2003 transferred to the Ticona-GUR (UHMWPE) group to develop applications for the melt processable GUR materials.

In 2005 his unique experience with design, product and process development and field experience led Tim to his first position in business development as Market Development Manager for Victrex where he developed new PEEK (polyetheretherketone) applications for the Upper Midwest region. He remained at Victrex until 2009.



Tim Spahr

Continued on page 9

SPE Tour of The Toro Company

The Upper Midwest Chapter of SPE was hosted by The Toro Company for a tour of its Bloomington, MN world headquarters; and the response from local plastics professionals was, quite frankly, overwhelming. The tour initially had capacity for 50 people. But, because of the extraordinary demand, several more were allowed at the day of the event. Of the attendees, it was a nice blend of SPE members and non-members from an amazing diversity of industries and locations. Most of the people were from the Twin Cities region, but some had traveled from as far away as Bemidji, MN and Sheboygan Falls, WI.

Left to right – Dan Mishek (SPE Board Member), Richard Bopp (SPE Chapter President) and Todd LeBoeuf (Toro Purchasing).



After **touring the facility**, SPE also hosted a networking event at Major's Sports Café that drew another 20 people. This was a fantastic way to end a successful chapter event. Everyone had a chance to discuss the tour, share industry insights, and meet new people to strengthen their own personal network. Some background on The Toro Company is given below along with a description of some of the areas highlighted on the tour.



60+ people attended the Networking Event that followed the Toro Tour.

The SPE Chapter plans on hosting similar tours of manufacturing facilities in 2011 and 2012. Please sign up early to assure you reserve a spot. Also, if you think your company would be a good facility to host a tour, please contact me at your earliest convenience.

Where did Toro originally reside? The original factory and offices were located on Snelling Avenue in Minneapolis.

1952 – Toro opened its engineering and test facility at the company's present Bloomington location. It included expansive grounds used to test a full spectrum of their products on plots with different grasses and field conditions.

1962 – The corporate headquarters were moved to the Bloomington site. One thing hasn't changed over all these years; the company's Bloomington facilities continue to serve as the corporate center for engineering, R&D, and product testing..

Toro's Test Lab Toro's test lab covers an area of over 56,000 sq. ft. consisting of 54 test cells, technician work areas, instrumentation labs, and offices. The test group is an important part of the engineering function and is very much involved in the development process that follows six steps, namely concept, feasibility, development, implementation, production, and VOC (voice of the customer) feedback.



Tilt Table

Environmental Stress Screening (Thermal Chambers and Salt Fog)



Cold Room



Plastic Adding Value at Toro - Toro uses a variety of plastic/resin technologies to help accelerate development of new products. For example, the company uses multiple RP (Rapid Prototype) technologies to provide marketing groups with "show" units for VOC work, demonstrations and customer meetings. In this way Toro can provide "tangible" and even functional units that can be viewed and used as an operational prototypes.

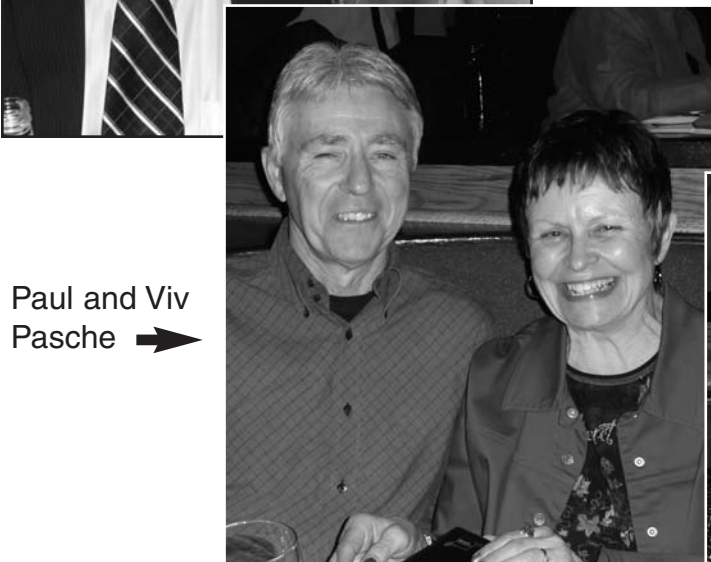
Continued on page 11

SPE Section 22 Awards Ceremony and Dinner at The Chanhassen Dinner Theatre



← Award Recipient - Sean Mertens and Jayne

Award Recipient -
Rolly Enderes and
his wife Mel →



Paul and Viv
Pasche →



←
Alan and
Dorothy
Johnson



← Tom and Sally
McNamara

Paul and Tracy
Rothweiler →



WHO CAN HELP YOU

SOCIETY OF PLASTICS ENGINEERS, INC.
PO BOX 0403, BROOKFIELD, CT 06804-0403

EXECUTIVE DIRECTOR	Susan Oderwald	
ANTEC Conference Management / ANTEC Booth Sales		
Lesley Kyle	203.740.5452	lskyle@4spe.org
ANTEC Paper Submission		
Peter Boergermann	203.740.5472	pboergermann@4spe.org
ANTEC Registration		
Martha Charris	203.740.5458	mlcharris@4spe.org
Awards (Chase, Husky)		
Laurie McDougal	203.740.5432	lamcdougal@4spe.org
Awards (STRETCH, PRIDE/Outstanding Division)		
Maria Russo	203.740.5431	mrusso@4spe.org
Awards (Essay Contest, HSM, Newsletter, STAR)		
Tricia McKnight	203.740.5430	tmcknight@4spe.org
Awards (Annual awards program)		
Gail Bristol	203.740.5447	grbristol@4spe.org
Book Orders		
Linda Roos	203.740.5449	lroos@4spe.org
Change of Address/Transfers		
Customer Relations	203.740.5403	membership@4spe.org
Council Liaison		
Marie Salzo	203.740.5422	mcsalzo@4spe.org
Divisions, Special Interest Groups, Student Chapters		
Maria Russo	203.740.5431	mrusso@4spe.org
Dues, Billing & Payments		
Customer Relations	203.740.5403	membership@4spe.org
Employment & Classified Ads		
Jackie Salzo	203.740.5411	jsalzo@4spe.org
e-Live™ Presentations & Courses		
Peter Boergermann	203.740.5472	pboergermann@4spe.org
e-Live™ Presentations Registration		
Linda Roos	203.740.5449	lroos@4spe.org
Journal/Magazine Orders		
Linda Roos	203.740.5449	lroos@4spe.org
Membership Processing/Questions		
Bonnie Kaczowski	203.740.5428	bakaczowski@4spe.org
Membership programs/retention		
Tobi Gebauer	203.740.5457	tgebauer@4spe.org
News Brief emails-sections/divisions/SIGs		
Deb Daily	203.740.5468	ddaily@4spe.org
Section & Division Billing		
Dolores Pruefer	203.740.5446	dcpruefer@4spe.org
Section & Division Investment Program		
Doris Thoren	203.740.5444	dithoren@4spe.org
Section Administration		
Tricia McKnight	203.740.5430	tmcknight@4spe.org
Seminar Program & In-Plant Training		
Laurie McDougal	203.740.5432	lamcdougal@4spe.org
Seminar Registration		
Martha Charris	203.740.5458	mlcharris@4spe.org
SPE Training Products & Bookstore		
Linda Roos	203.740.5449	lroos@4spe.org
The SPE Foundation Scholarships & Grants		
Gail Bristol	203.740.5447	grbristol@4spe.org
Topical Conference Planning		
Leslie Kyle	203.740.5458	lskyle@4spe.org
Topical Conference Registration		
Martha Charris	203.740.5458	mlcharris@4spe.org
Website		
Deb Daily	203.740.5468	dadaily@4spe.org

Upper Midwest Section (S22) Membership

March 1, 2011

Section Total 429

OPEN Invitation to all Upper Midwest Section Schools/Colleges to JOIN the Society of Plastics Engineers (SPE)

Here are Top 10 reasons to join the SPE

Student Members of SPE have all the privileges of SPE membership afforded to other member grades, including:

- Reduced SPE membership dues – ONLY \$31.00 per year
- *Plastics Engineering* magazine every month
- Reduced registration for all educational seminars; Reduced registration at ANTEC and other technical conferences
- Discounts on over 100 important publications
- Insurance programs
- 3 free “position wanted” ads in *Plastics Engineering*; Access to *Career Solutions*, SPE’s Online Plastics Employment Network
- Scholarships offered through the SPE Foundation, SPE Sections and Divisions; Cash Awards for Best Paper/Poster at many SPE-sponsored Conferences.
- FREE membership to your local SPE Section; FREE Division affiliation
- Section dinner meetings; technical programs and even Special Events.
- Professional contacts

... and much more!!!

Councilor's Corner

Tom McNamara

Councilor's Corner



The last Council meeting took place on February 11th. This was a teleconference meeting so not as interactive as the normal Council meetings. We apparently are still losing some Sections due to lack of leadership. Central Texas, Hong Kong, Mid-Michigan, St. Louis, and Tri-State have been declared vacant. However, the good news on the overall organization is that after a reduction of more than 2500 members in 2009, we actually had a net gain of over 300 members in 2010. We gained 1000 more new members in 2010 vs 2009 and our attrition rate dropped from 30% to 23%, both positive indicators going into 2011.

This brings us to President Ken Braney's key strategic objectives for 2011.

Membership - - Improve member benefits and delivery infrastructure; initiate new SPE groups outside of its traditional markets; and emphasis on all professional plastic sectors.

Revenue - - Form additional partnerships; provide more licensing opportunities; increase the number of corporate affiliate programs and sponsorships; and implement more disciplined sales programs.

Member involvement & control - - Form a Strategic Planning committee; promote local groups taking local control; and receive input from online activities, social media

A few bylaws were passed with one affecting joining multiple Sections and fees being the same as for belonging to multiple Divisions. Another was concerning Councilor Proxy tenure requirements. Still another was in regards to Council meeting times and places being approved as published.

As far as the financials, the 2010 unaudited results reflect a \$100M + net gain and the SPE Foundation remains in good shape with a gain of over \$125M over 2009 numbers.

The Strategic Planning Committee is very busy looking at alternate operating models for SPE Intl. This

is a huge task and is being investigated with the feeling that a change is necessary for the long term health of the organization. Some of the early models proposed met with a fair amount of resistance and I personally think it was justified. We will have to wait and see what the new model looks like but, again, this is a huge undertaking and resources are limited with this being a volunteer organization.

SPE International is expanding globally with Sections in Europe and Asia. SPE is also sponsoring ANTEC type events in both regions. ASIATEC took place in Tokyo, Japan on February 15-17 and EUROTEC will be taking place in Barcelona, Spain on November 14-15. If you have the opportunity, convince your boss to send you to a technical update in Barcelona around mid-November!!

Also, don't forget that our own ANTEC is coming up fast from May 1-5th in Boston. I am told that the paper submissions are up 25% from 2010 and the exhibition sales are on pace with 2010. Also remember to encourage your company to exhibit at ANTEC. It is a great venue to get your name out nationally and our Section will get a rebate for every company that exhibits from our Section's geographic area.

I would also like to announce our newest Board member, Tim Spahr, of Oxford Performance Polymers. Tim has graciously agreed to be our new Membership Chair, while our previous Membership Chair, Dan Mishek, has agreed to take over the role of Program Chair.

I would also like inform you that Sean Mertes won our Sections Meritorius Service award at our recent Awards Banquet. Sean has organized Mini and MegaTec's as our Program Chair for many years and is finally giving up the post due to "exhaustion". Great work Sean. Also Rolly Enderes received our Outstanding Communications award for his fantastic work on our SPEcialist Newsletter and our Upper Midwest Section website. Thanks for all the hard work Rolly!!

And last but not least, I would like all of you to help me congratulate our President, Dick Bopp, for his election as a Fellow of the Society of Plastics Engineers. This is a real honor within the Society as less than 5% of the membership can be elected to this prestigious position. CONGRATULATIONS DICK - - YOU ARE VERY DESERVING!!!!

SPOTLIGHT ON THE BOARD – Tim Spahr

Continued from page 4

Tim is now the Regional Business Manager for Oxford Performance Materials, in the Arkema Group, where he is developing new markets and applications for crystalline and amorphous PEKK (Polyetherketoneketone) polymers, a resin system having even higher temperature performance with a melting point over 340 deg C (640 deg F). Now, that's hot!

If you had the good fortune to attend our MegaTech last November at HTC on "Selecting the Proper Plastic Material," then you heard Tim's expert presentation on "High Performance Resins."

I asked Tim to prepare a brief statement about his involvement in the Society. Here it is in his words:

"In the beginning, I joined SPE to get a better understanding of the plastics industry and to develop a network of industry contacts. I still feel that way today. Involvement in SPE is a great way to network and to stay on top of the new developments (materials and processes) in the industry. I am proud to be a part of the Upper Midwest Section, on their board of directors and to serve in the position of Membership Chair. I look forward to the future as the polymers, processes and markets change."

We are indeed very fortunate to have Tim joining us from Galesville, Wisconsin to serve on our Board as Membership Chair. We all thought it might be a little unfair to ask him to prepare the Membership Matters column for this issue, so Dan stepped up to do double duty. But, I'm sure you'll be hearing more from Tim in the not too distant future. Please join me in welcoming him to our Board and be sure to say, "Hi!" at the next MegaTec on March 30th.

ADVERTISERS WANTED!!

The SPEcialist is the newsletter of the Upper Midwest Section of the Society of Plastics Engineers and currently circulates to over 800 plastics professionals in the region. At present, the newsletter is published and mailed four times a year. New this year is a website (<http://www.uppermidwestspe.org>) and our plan is to run the print ads on the website, too. Now when you advertise with SPE-Upper Midwest Section you will have even greater exposure than before and we plan to keep the rates we had in the past for the newsletter.

Rate (per issue): Full Page: \$900; Half-Page: \$450; Quarter-Page: \$225; Business Card: \$75

Employment Ads (1/2 Business Card):

Open positions	\$50
Positions wanted	
S22 members	Free
Non-members	\$25

How to place your ad: Email me at bpriedeman@aol.com and Rolly Enderes (Newsletter/Online editor) at rolly@chemceed.com with the following information: the size of the ad, the number of issues, and the artwork. Rolly will review the artwork and place the ad in the newsletter and on the website.

Once the newsletter is published, you will be invoiced and instructed to issue a check to "SPE, Upper Midwest Section" for the appropriate amount and mail it to Marv Grussing (Treasurer) at 7-SIGMA, 4832 Winterset Drive, Minnetonka, MN. Terms are net 30.

Thank you for your support! Bill Priedeman (Advertising Chair), SPE-Upper Midwest Section S22



Society of Plastics Engineers Membership Application

P.O. Box 403, Brookfield, CT 06804-0403 USA
Tel: +1.203.740.5403 Fax: +1.203.775.8490
www.4spe.org

European Member Bureau
Eric Sasselaan 51, BE-2020 Antwerpen, BELGIUM
Tel: 32 (0)3 541 7755 Fax: 32 (0)3 541 8425 www.speeurope.org

Applicant Information

Name:
first last mi

Company Name and Business Address (or College):
company/college:
job title:
address:
address:
city: state:
zip: country:

Phone/Fax Format: USA & Canada: (xxx) xxx-xxxx All Others: +xx(xx) x xxx xxxx

Work Phone: **Fax:**

Email: *used for society business only*

Home Address:
address:
city: state:
zip: country:

Home Phone:

() Preferred Mailing Address: Home Business

Gender: Male Female

Birth Date: (mm/dd/yyyy)

Demographics

Job Function (choose only one)

Consulting Purchasing
 Design Quality Control
 Education (Faculty) R & D
 Engineer Retired
 General Management Self-Employed
 Manufacturing Student
 Marketing/Sales Tech Support
 Other

Materials (choose all that apply)

Composites Polyolefins
 Film Polystyrene
 General Interest TPEs
 Nylon Thermoset
 PET Vinyls
 Foam/Thermoplastics No Interest

Process (choose all that apply)

Blow Molding Injection Molding
 Compression Mold Making
 Compounding Product Design
 Engineering Properties Rotational Molding
 Extrusion Thermoforming
 Fabrication General Interest
 Foam No Interest

The SPE Online Membership Directory is included with membership. Your information will automatically be included.

Exclude my email from the Online Member Directory
 Exclude all my information from the Online Member Directory
 Exclude my address from 3rd party mailings

Payment Information

New Member 1 Year <input type="checkbox"/> US (\$128.00) <input type="checkbox"/> Canada (\$152.00) <input type="checkbox"/> Euro** (€124.00)	New Member 2 Years * <input type="checkbox"/> US (\$235.00) <input type="checkbox"/> Canada (\$278.00) <input type="checkbox"/> Euro** (€226.00)	Student Member <input type="checkbox"/> US (\$30.00) <input type="checkbox"/> Canada (\$36.00) <input type="checkbox"/> Euro** (€25.00)	Students must supply graduation date: _____												
My Primary Division is (choose from below) _____			Membership Amount _____												
Additional Divisions are available for a fee. Check below to select Additional Divisions.			Primary Division FREE												
<input type="checkbox"/> Additives & Color Europe (D45) <input type="checkbox"/> Medical Plastics (D36) <input type="checkbox"/> Automotive (D31) <input type="checkbox"/> Mold Making & Mold Design (D35) <input type="checkbox"/> Blow Molding (D30) <input type="checkbox"/> Plastics Environmental (D40) <input type="checkbox"/> Color & Appearance (D21) <input type="checkbox"/> Polymer Analysis (D33) <input type="checkbox"/> Composites (D39) <input type="checkbox"/> Polymer Modifiers & Additives (D38) <input type="checkbox"/> Decorating & Assembly (D34) <input type="checkbox"/> Product Design & Development (D41) <input type="checkbox"/> Electrical & Electronic (D24) <input type="checkbox"/> Rotational Molding (D42) <input type="checkbox"/> Engineering Properties & Structure (D26) <input type="checkbox"/> Thermoforming (D25) <input type="checkbox"/> Extrusion (D22) <input type="checkbox"/> Thermoforming, European (D43) <input type="checkbox"/> Flexible Packaging (D44) <input type="checkbox"/> Thermoplastic Materials & Foams (D29) <input type="checkbox"/> Injection Molding (D23) <input type="checkbox"/> Thermoset (D28) <input type="checkbox"/> Marketing & Management (D37) <input type="checkbox"/> Vinyl Plastics (D27)			Additional Division(s) costs for each Additional Division <table border="0"> <tr> <td></td> <td>1yr.</td> <td>2 yrs.</td> </tr> <tr> <td>US</td> <td>\$6.00</td> <td>\$12.00</td> </tr> <tr> <td>Canada</td> <td>\$7.00</td> <td>\$14.00</td> </tr> <tr> <td>Euros</td> <td>€5.00</td> <td>€10.00</td> </tr> </table>		1yr.	2 yrs.	US	\$6.00	\$12.00	Canada	\$7.00	\$14.00	Euros	€5.00	€10.00
	1yr.	2 yrs.													
US	\$6.00	\$12.00													
Canada	\$7.00	\$14.00													
Euros	€5.00	€10.00													
			TOTAL _____												

CHECK VISA AMEX MASTERCARD

card number _____

expiration date (mm/yyyy) _____

PAYMENT MUST ACCOMPANY APPLICATION
No Purchase Orders Accepted

Checks must be drawn on US or Canadian banks in US or Canadian funds.

Dues include a 1-year subscription to *Plastics Engineering* magazine—\$38.00 value (non-deductible).
SPE membership is valid for twelve months from the month your application is processed.
*extra savings. **European membership dues include a program fee to support SPE's activities in Europe.

By signing below I agree to be governed by the Constitution and Bylaws of the Society and to promote the objectives of the Society. I certify that the statements made in the application are correct and I authorize SPE and its affiliates to use my phone, fax, address and email to contact me.

signature _____ date _____

recommended by member (optional) _____ id # _____

WWW

Continued from page 5 – Toro Company Tour

From the design perspective, plastics help with weight reduction (fuel economy), better weather resistance eliminate corrosion), improve impact durability, and provide attractive styling options. Additionally, plastics often offer a lower cost raw materials option with better recyclability with particular success found in fuel/oil storage applications.

Why Does Toro Get Involved? According to Toro, it is important that they stay active in the industry through association relationships and collaboration with industry partners. This enables the company to share expertise and best practices, and ultimately form tighter relationships with external partners.

From the “prototyping” side of the business, industry relationships are very important. Quite often, while developing new products Toro looks for faster, cheaper, and better ways to “simulate” the performance of plastic components in its products. By developing strong relationships with people/ suppliers in the Plastics/Resins Industry, the company not only gets exposure to the “latest and greatest” and “new and improved”, but also ready access to more cost effective alternative raw materials. Any cost savings Toro can realize during the development phase of its products, only enhances the ability to cut costs for end use customers. And technology is key...anything to help Toro get to market faster, is always a great benefit!

Why does Toro maintain operations in Minnesota? Toro’s roots run deep in the economic, social and cultural fabric of Minnesota. In the early 1900’s, the Twin Cities was a national hub for agricultural tractor manufacturing. Toro got its start in 1914 providing engines for one of the leading manufacturers in the field – Bull Tractor Company of Minneapolis. At the time, Bull Tractor sold more farm tractors than any other company. By the close of World War II, the company’s founders faced some tough decisions. The original owners decided it was time to sell, but out of concern for the local economy and especially its people, the company wanted to escape the fate of other local companies that had been either shuttered or relocated. So, Toro made a determined effort to find a local group, committed to Minnesota, to purchase the company. Ultimately, the company was sold to a group of buyers led by David Lilly, Robert Gibson and Whit Miller.

This action and their continued commitment to the region reflect the commonality of traditional Minnesota values and those of the company. Toro’s success is founded on a long history of caring relationships of trust and integrity. As Kenneth Goit, the company’s third president put it, “The success of this company is no secret. It has been due to two simple things: building a good product and treating customers honestly and fairly...the only way to success is by fair and honest treatment of customers.” Toro achieves these goals by valuing their employees and empowering them to serve. Toro has always been a Minnesota company and much of its success has to do with its people.

In Minnesota, Toro has manufacturing locations in Windom and Shakopee. Most of the professional product lines are produced in Tomah, Wisconsin and Beatrice, Nebraska. Toro feels that some of the particular challenges facing manufacturers today are: managing capacity, improving their flexibility to better match shifts in demand, and staying cost competitive.

I want to give my personal thanks to the Toro Company for opening its doors to our SPE Section and for their assistance in preparing this follow up article.. Finding welcoming companies, like Toro, who are willing to dedicate the time and effort for a general tour of their facilities for societies like ours is indeed a rarity. It’s easy to see why Toro is a world leader in their industry. Thank you Toro for your gracious hospitality and your great support of the plastics industry in the Upper Midwest. Best wishes for much continued success.

What’s Next? Our SPE Section will be hosting similar tours at local plastics manufacturing and research facilities in 2011 and 2012. Announcements will be sent out in our newsletter, The SPEcialist, and by email. Please be sure to make your reservation early as the tour group size is usually limited. Also, if you think your company would be a good facility to host a tour, please contact me, Dan Mishek, Technical Program Chair, (dan@vistatek.com) at your earliest convenience.



NatureWorks  ingeo™
www.natureworkslc.com ingenuity from plants not oil



FORMING SOLUTIONS INC
Consult - Design - Prototype - Engineer
Jeff Ewert 218-556-4353 • Scott Bradley 763-463-9690
www.formingsolutionsinc.com
Everything thermoforming related, except production parts.

Upper Midwest Section Board of Directors 2010 - 2011

www.4spe.org

PRESIDENT

Richard C. Bopp
NatureWorks LLC
15305 Minnetonka Blvd.
Minnetonka, MN 55345
952-742-0454
952-742-0481 FAX
richard_c_bopp@natureworksllc.com

PAST PRESIDENT

Paul Rothweiler
Aspen Research Corp.
1700 Buerkle Road
St. Paul, MN 55110
651-341-5427
651-264-6270 FAX
paul.rothweiler@aspenresearch.com

Sean Mertes

Ashland Distribution
19095 Wells Lane.
Jordan, MN 55352
612/801-2417 MOBILE
sdmertes@ashland.com

Jeff Voelker

SABIC Innovative Plastics
33 Founders Green
Hudson, WI 54016
651-895-9482 CELL
651-846-5023 FAX
jeffrey.voelker@sabic-ip.com

TREASURER

Marv Grussing
7-SIGMA
4832 Winterset Drive
Minnetonka, MN 55343
612/252-6242 W
952/933-8008 H
612/252-6292 FAX
Office: mgrussing@7-sigma.com
Home: mmgrussing@comcast.net

TECHNICAL PROGRAM CHAIR

Dan Mishek
Vista Technologies
380 Oak Grove Pkwy, Suite 100
Vadnais Heights, MN 55127
651-653-0400
dan@vistatek.com

NETWORKING CHAIR

Eric Swensied
Harbor Plastics, Inc.
1470 County Road 90
Maple Plain, MN 55369
763-479-4772
763-479-4776 FAX
erics@harbor-plastics.com

ADVERTISING CHAIR

Bill Priedeman
405 S. Willow Drive
Long Lake, MN 55356
612-850-8987
bpriedeman@aol.com

NEWSLETTER/ ONLINE EDITOR

Rolly Enderes
ChemCeed, Corp.
705 Bay Street, Suite 2A
Chippewa Falls, WI 54729
715-726-2300
715-726-2314 FAX
rolly@chemceed.com
www.chemceed.com

INTL. COUNCILOR

Thomas McNamara
Thermotech
1202 S. Fifth Street
Hopkins, MN 55343
952-933-9438
952-933-9499 FAX
thomas.mcnamara
@thermotech.com

SECTION AMBASSADOR

AWARDS CO-CHAIR

Dave Erickson
13502 Essex Court
Eden Prairie, MN 55347
952/937-0960
952/829-5966 FAX

SECRETARY

Ajay Gupta
Boston Scientific
Two Scimed Place
Maple Grove, MN 55311
763-494-1510
guptaa@bsci.com

AWARDS CO-CHAIR

Lu Verne (Verne) Erickson
Clariant Corporation
9101 International Parkway
Minneapolis, MN 55428
763-971-6143
763-971-6133 FAX
verne.erickson@clariant.com

MEMBERSHIP CHAIR

Tim Spahr
Oxford Performance Materials, Inc.
Arkema Group
W17878 Silver Creek Rd
Galesville, WI, 54630
P: 608-582-2829
www.oxfordpm.com
www.arkema.com/opm

CALENDAR OF EVENTS

April 7-8, 2011 - SPE Thermoset
Conference - Chicago, Illinois

Trump International Hotel and Tower,

May 1-5, 2011 - ANTEC 2011- Boston,
Massachusetts

Hynes Convention Ctr, Boston Marriott Copley Center Hotel

November 14-15, 2011

EUROTEC 2011- Barcelona Spain



SOCIETY OF PLASTICS ENGINEERS

Upper Midwest Section
Richard Bopp / NatureWorks, LLC
15305 Minnetonka Blvd. • Minnetonka, MN 55345

FORWARDING SERVICE REQUESTED

PRESORTED
FIRST CLASS MAIL
U.S. POSTAGE PAID
MPLS., MN
Permit No. 1024