

SPE THE SPECIALIST

2013 MEGATECH

TUESDAY NOVEMBER 12, 2013

9:30 am – 3:30 pm (9:00 am Registration)

PRE-REGISTRATION STRONGLY ENCOURAGED

Hennepin Technical College

9000 BROOKLYN BLVD, BROOKLYN PARK, MN 55445-2320

www.hennepintech.edu • 1-800-345-4655

ADVANCING PRODUCT COMMERCIALIZATIONS

OVERVIEW

➤ *Product Development Materials*

- *Things to think about when working with an external design firm*
 - *Things to think about when designing internally*

➤ *Materials*

- *How to select & commonly used materials and why?*
 - *Trends, additives and "greener" material*

Other Topics

➤ *Manufacturing Methods*

➤ *Trends in Manufacturing (Technologies & Reshoring)*

➤ *Panel Discussion (Problem Solving and Sourcing)*

REGISTRATION

Advance Reservation by November 8th: **SPE Members:** \$100 **Non-Members:** \$125.00

All Registration after Nov 8th: \$150.00 **Student with ID:** \$20.00

4 or more from same company (must register together): \$100 SORRY – NO REFUNDS!

Snacks, Lunch and Conference are included in costing.

Register at www.uppermidwestspe.org

For more information contact or questions: Dan Mishek (danny@vistatek.com)



www.eoplastics.com

- Mold Making • Injection Molding • Over Molding
- Value Added Manufacturing • Insert Molding

19178 Industrial Blvd.
Elk River, MN 55330

763-441-6100 Ext. 132
Fax: 763-441-6452



BILL PRIEDEMAN
New Business Development Manager
EMS-GRIVORY America

EMS-CHEMIE (North America) Inc., 2060 Corporate Way,
P.O. Box 1717, Sumter, SC 29151-1717, USA
Direct/Cell: (612) 850-8987, Fax: (803) 481-6121
E-mail: bill.priedeman@us.emsgrivory.com, www.emsgrivory.com



NatureWorks  **ingeo**™

www.natureworkslc.com

ingenuity from plants not oil

ADVERTISING SPACE AVAILABLE

Place your ad here by contacting
SPE Section 22
Bill Priedeman: bpriedeman@gmail.com



Consult - Design - Prototype - Engineer

Jeff Ewert 218-556-4353 • Scott Bradley 763-463-9690

Sam McCord
CEO/Founder

3425 Sycamore Court NE
Cedar Rapids, Iowa 52402

phone: 319.378.0077

fax: 319.378.1577

cell: 319.270.4507

www.mcgbio.composites.com

mccord@mcgbio.composites.com



BIOCOMPOSITES LLC



Exactly your chemistry.

Candace Johnson 800-328-5589
John Wooten 800-328-5589

www.clariant.masterbatches.com

Your Source for the Leaders in
3D Printing & Production Systems



ADVANCED
TECHNOLOGY SYSTEMS, INC.

800-482-9005 | 651-489-6990

sales@advtek.com

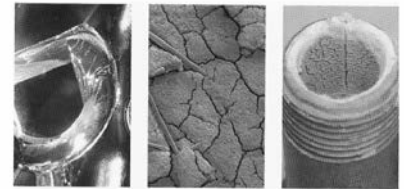
www.advtek.com



Stratasys
FOR A 3D WORLD™



The Madison Group
Consultants for the Plastics Industry



5510 Nobel Drive, Suite 215
Madison, WI 53711 USA
Ph: (608) 231-1907
Fx: (608) 231-2694
email: info@madisongroup.com
www.madisongroup.com

Failure Analysis
Material Engineering
Processing Analysis

Put years of plastics engineering experience to work for you

Advertisers Index

Advanced Technology Systems, Inc.....	Page 2
Clariant	Page 2
E & O Tool and Plastics, Inc.....	Page 2
Forming Solutions, Inc.....	Page 2
Madison Group	Page 2
MCG Biocomposites	Page 2
Ingeos	Page 9
The Polymer Lab	Page 5
VistaTek.....	Page 2



Now Hiring:
Program Manager
Quality Assistant
Mold Designer
CNC Programmer
Mold Maker
Apply Today!

www.VistaTek.com | 651-653-0400 | parts@vistatek.com
1850 Greeley St S, Stillwater, MN 55082 (**NEW LOCATION**)

President's Remarks

Dan Mishek

As another year wraps up and kid's activities are in full bloom, I wonder how did we make it through another year? How did we manage to fit anything into our busy schedules? What else can we fit in or where can we fit it in? If you look around, we have enormous distractions with little focus on balance. We are focused on the daily grind, taxiing kids around, office meetings, sad stories in the news, the government shutting down, elections, etc.



I, personally, have been through a lot over the last 12 months. Selling a division, moving into 4-times more space, adding 8 pieces of capital equipment, adding 7 new employees, coaching my son's baseball team, helping with my three daughters and their piano, guitar and play dress-up routine, putting solar panels on my roof, getting to an 8 handicap, working with the U of M Medical Device Center, plan a golf tournament for church, join the local city chamber, etc. This paragraph sounds ridiculous!

My point is that we are all busy. My challenge to you is to take a deep breath and admit that this is life as we know it. It will not slow down and the days will not get longer. We need to find balance. Balance your work, family, faith and fun. The more balance you find, the more fun you will have. I have recently been blessed to be in certain meetings because of my networking through the local SPE Chapter. If I did not make time for SPE, my work may have suffered. The opportunities that are out there waiting to be had are for the balanced people. Include a friend, spouse or co-worker and join SPE in our activities. Create your own opportunities with the knowledge that you gain from the local level to the national level. Leap and the net will appear - Zen saying.

Councilor's Corner

Paul Rothweiler -

Councilor - Upper Midwest Section

We are gearing up for another Councilor's meeting on November 16, 2013. If there are issues you would like addressed, please contact me. In the meantime I'd like to remind you of the upcoming activities and tools we've built to support communications between members.



Make sure to have the following events on your calendar. Materials Characterization Workshop on October 29th hosted by Aspen Research. The Annual banquet and awards ceremony in January. And the Medical Plastics Minitech the week of March 24th hosted at Hennepin Technical College. The Medical Plastic MiniTech is a joint-program with the Medical Plastics Division of SPE and will have a good representation of all the stakeholders in the medical industry, including attendees from all over the nation. It's a "must attend" event. Finally, I know you have ANTEC on your calendars already. See you in Las Vegas!

Many of you communicate very effectively with us by e-mail. I'd also like to point out there are a number of other online tools you can use to communicate with us. Look for Upper Midwest Section SPE in Facebook, Twitter and Linked In. Join the conversation online. Or visit the Section's website at uppermidwestspe.org.

In closing we'd encourage you to share with your colleagues the reasons why you are a member of SPE. We'd appreciate a few more good people like you in SPE. A special shout-out to the University of St. Thomas class ETL5 771 led by Dr. Genevieve Gagnon. We look forward to welcoming your class as a student chapter of SPE.

Spotlight on the Board

Michael Arney

Michael Arney is a Minnesota native. He earned his BS in Chemical Engineering and PhD in Aerospace Engineering from the University of Minnesota, where he studied polymeric and rheological fluid mechanics. He then went on to be a post-Doctoral research assistant for Elf Atochem, Normandy, France, where he investigated multilayer coextrusion instabilities. He was a Principal Engineer at Aspen Research for five years before joining Boston Scientific, where he is currently a Research Fellow. His areas of expertise include polymer analysis, Finite Element Analysis, and polymer processing, including extrusion, injection molding, and ultrasonic welding. Michael joined SPE in 1997 and has been a member of the Medical Plastics Special Interest Group.

Scholarship Committee

Thomas McNamara & Paul Rothweiler

The academic year is off to a great start and we are excited to start receiving applications for our three scholarships. Award levels are the same as 2013 at \$400 for the Tony Norris Award, \$500 for the Jerome Formo Award, and \$1,000 for the Founder's Award. We encourage everyone to visit the website at uppermidwestspe.org/edu.htm. Hyperlinks to the current forms and instructions are located there.

A quick reminder to those in industry. There are a number of ways you can support our student members. They range from providing internship and mentorship opportunities, to hiring their schools for projects, where the school can use the money to offset costs associated with attending ANTEC. If you need help getting connected to a student chapter, please feel free to contact us.

WELCOME TO OUR NEW MEMBERS - Mahin Shahlari, Membership Chair

We are pleased to welcome our newest members of the Upper Midwest Section. As of October 16th, our section has 399 active members! Tell your friends and co-workers about the SPE Upper Midwest Section to help us grow and extend our service to them.

New Member	Affiliation	New Member	Affiliation	New Member	Affiliation
Scott Voisin		Gelate D. Disasa	Hennepin Technical College	Jacob Young	3M
Mike Gorzek	Air Logic Power Systems	Jason H. Ernst	Hennepin Technical College	Daniel Men	Gopher Sport
Pierce Hanson		John T. Francis	Hennepin Technical College	Diana B. White	Pine Technical College
Matthew H. Lundblad	Winona State	Himie Freeman	Hennepin Technical College	Tyler V. Young	Plastic Products Co., Inc.
Sheridan Sparrow	LINDAR Corp	Sylvester R. Gayekpar	Hennepin Technical College	QingHui Yuan	Eaton
David Bogenhagen	Airworthy Aerospace	Joseph R. Hansen	Hennepin Technical College	Gordon Eby	Spray Control Systems/Minimizer
Rick Burnton	Aspen Research	Mohamud O. Hersi	Hennepin Technical College	Steve Turch	3M
David Chou	Prophotosynthetics	Charles H. Hutchinson	Gotta Go Gotta Throw Inc.	Jay Jennen	3M
Mark Schweitzer	Airworthy Aerospace	Abdi Isak	Hennepin Technical College	Adam Bossert	Raven Industries, Inc.
Jake Stephany	Wilbert Plastic Services	Grams Kolleh	Hennepin Technical College	Ross Jackson	
Ajay Kathuria	Michigan State University	Thomas S. Lipe	Hennepin Technical College		
Evan W. Collins	Winona State University	Saosamprathna Oudom	Hennepin Technical College		
Nicholas D. Helberg	Winona State University	David Solomon	Hennepin Technical College		
Benjamin D. Adams	Hennepin Technical College	Nicholas D. Stocker	Hennepin Technical College		
Rayshawn L. Bentley	Hennepin Technical College	Mary L. Sundeen	Hennepin Technical College		
Robert L. Cassell	Hennepin Technical College	Chester Weah	Hennepin Technical College		
Alex B. Charlton	Hennepin Technical College	Kongpheng Yang	Hennepin Technical College		
Colin A. Cook	Hennepin Technical College	Doug Culbertson	Premold Corporation		

Annual Golf Outing 2013



The Polymer Lab offers thermal, chemical and rheological testing of polymer raw materials through finished plastic parts.

Our laboratory has plastic testing capability for:

- Material Identification
- Contamination Identification
- Degradation Analysis
- Crystallinity Verification
- Reverse Engineering
- Product Failure Analysis
- Process Validation
- Ongoing Quality Assurance
- Moisture Analysis



The Polymer Lab's material analysis procedures include:

- Thermogravimetric Analysis-TGA
- Microstructural Analysis-MSA
- Differential Scanning Calorimetry-DSC
- Fourier Transform Infrared Spectrometry-FTIR
- Ash content-Burn-off Testing
- Melt Flow Rate-MI/MFR
- Relative Viscosity-RV
- Capillary Rheometry
- Karl Fischer Titration-KFT



866-864-4902 Toll Free
www.thepolymerlab.com

1302 South 5th Street
Hopkins, MN 55343
info@thepolymerlab.com



SOCIETY OF PLASTICS ENGINEERS MEMBERSHIP APPLICATION

13 Church Hill Road, Newtown, CT. 06470 USA
Tel: +1 203-775-0471 Fax: +1 203-775-8490
membership@4spe.org www.4spe.org

European Member Bureau
Tel: +44 7500 829007
speurope@4spe.org www.speurope.org

Applicant Information: (please print)

My Primary Address is home _____ or business _____ (check one)

Name _____
First MI Last

Phone Number _____ Home ___ Work ___ Cell ___

Organization Name _____

Job Title _____

Address _____

Email(Required Field) _____

Address _____

Alternate Email _____

Address _____

City _____ State _____

Date of Birth _____ Graduation Date* _____

Zip/Postal Code _____ Country _____

Gender: Male ___ Female ___ *Required for Student Membership

Membership Types (please check one)

_____ **Student \$31** _____ **Young Professional \$99** _____ **Professional \$144**(includes \$15 new member initiation fee)
Choose up to 2 Member Groups on the back of this application.

_____ **Professional +2 Additional Member Groups \$164** Choose up to 4 Additional Member Groups on the back of this application.

_____ **Professional +4 Additional Member Groups \$184** Choose up to 6 Additional Member Groups on the back of this application.

Payment Information: PAYMENT MUST ACCOMPANY APPLICATION-NO PURCHASE ORDERS ACCEPTED

Amount _____ Check Number _____ Cash _____

Credit Card Information (Check One) American Express _____ Visa _____ MasterCard _____

Credit Card Number _____ Exp. Date _____ Security Code _____

Name On Credit Card _____ Amount _____

By signing below I agree to be governed by the Bylaws of the Society and to promote the objectives of the Society. I certify that the statements made in the application are correct and I authorize SPE and its affiliates to use my phone, fax, address and email to contact me.

Signature _____ Date _____

Recommended by _____ ID# _____

The SPE Online Membership Directory is included with membership. Your information will be automatically included.

- _____ Exclude my email from the Online Membership Directory.
- _____ Exclude all my information from the Online Membership Directory.
- _____ Exclude my address from 3rd party mailings.

Dues include a 1year subscription to *Plastics Engineering* magazine-\$38.00 value (non-deductible). SPE membership is valid for twelve months from the date your membership is processed.

**OPEN Invitation to all
Upper Midwest Section
Schools/Colleges
to JOIN the Society of Plastics
Engineers (SPE)**

Top 10 reasons to join the SPE

Student Members of SPE have all the privileges of SPE membership afforded to other member grades, including:

- Reduced SPE membership dues – ONLY \$31.00 per year
- *Plastics Engineering* magazine every month
- Reduced registration for all educational seminars; Reduced registration at ANTEC and other technical conferences
- Discounts on over 100 important publications
- Insurance programs
- 3 free “position wanted” ads in *Plastics Engineering*; Access to *Career Solutions*, SPE’s Online Plastics Employment Network
- Scholarships offered through the SPE Foundation, SPE Sections and Divisions; Cash Awards for Best Paper/Poster at many SPE-sponsored Conferences.
- FREE membership to your local SPE Section; FREE Division affiliation
- Section dinner meetings; technical programs and even Special Events.
- Professional contacts

... and much more!!!

**Upper Midwest Section
(s22) Membership**

October 2013

Section Total 399

WHO CAN HELP YOU

SOCIETY OF PLASTICS ENGINEERS, INC.
PO BOX 0403, BROOKFIELD, CT 06804-0403
PHONE: 203-775-0471 • FAX: 203-775-8490
WEB: www.4spe.org
Office Hours: 9:00 a.m. - 5:00 p.m (Eastern Time)

Gail Bristol	ACADEMIC OUTREACH 203.740.5447	grbristol@4spe.org
Sarah Sullinger	ANNUAL AWARDS 203.740.5422	ssullinger@4spe.org
Lauren McCarthy	ANTEC BOOTH SALES/CONFERENCE MANAGEMENT 203.740.5472	lmccarthy@4spe.org
Barbara Spain	ANTEC PAPER SUBMISSION 203.740.5418	bspain@4spe.org
Bonnie Kaczowski	BOOK ORDERS 203.740.5428	bakaczowski@4spe.org
Customer Relations	CHANGE OF ADDRESS 203.775-0471	membership@4spe.org
Sarah Sullinger	COMMUNICATIONS EXCELLENCE AWARD 203.740.5422	ssullinger@4spe.org
Lauren McCarthy	CONFERENCE REGISTRATION 203.740.5472	lmccarthy@4spe.org
Lauren McCarthy	CONFERENCE SPONSORSHIP 203.740.5472	lmccarthy@4spe.org
Gail Bristol	CORPORATE AFFILIATE PROGRAM 203.740.5447	grbristol@4spe.org
Gail Bristol	CORPORATE OUTREACH 203.740.5447	grbristol@4spe.org
Customer Relations	DUES/BILLING/PAYMENTS 203.775-0471	membership@4spe.org
888-491-8333 ext. 1063	EMPLOYMENT ADVERTISING customerservice+64639@support.boxwoodtech.com	
Sarah Sullinger	FELLOW & HONORED SERVICE NOMINATIONS 203.740.5422	ssullinger@4spe.org
Sarah Sullinger	GOVERNANCE LIAISON 203.740.5422	ssullinger@4spe.org
Tom Conklin	MARKETING/MEMBERSHIP DIRECTOR 203.740.5453	tconklin@4spe.org
Customer Relations	MEMBERSHIP PROCESSING/QUESTIONS 203.775-0471	membership@4spe.org
Sue Wojnicki	MEMBERSHIP PROGRAMS/RETENTION 203.740.5420	swojnicki@4spe.org
Sarah Sullinger	PINNACLE AWARD 203.740.5422	ssullinger@4spe.org
Joseph Tomaszewski	PLASTICS ENGINEERING MAGAZINE ADVERTISING 908-514-0776	
Dawn Roman-Weide	SECTION & DIVISION INVESTMENT PROGRAM 203.740.5414	dromanweide@4spe.org
Sarah Sullinger	SECTIONS, DIVISIONS & SPECIAL INTEREST GROUP ADM. 203.740.5422	ssullinger@4spe.org
Lauren McCarthy	SEMINAR PROGRAM & IN-PLANT TRAINING 203.740.5472	lmccarthy@4spe.org
Lauren McCarthy	SEMINAR REGISTRATION 203.740.5472	lmccarthy@4spe.org
Tom Conklin	SOCIAL NETWORKING 203.740.5453	tconklin@4spe.org
Gail Bristol	SPE FOUNDATION/SCHOLARSHIPS & GRANTS 203.740.5447	grbristol@4spe.org
Sue Wojnicki	SPE INDUSTRY RESOURCE GUIDE 800-816-6710	spe@multiview.com
Lauren McCarthy	STUDENT CHAPTERS 203.740.5420	swojnicki@4spe.org
Lauren McCarthy	TOPICAL CONFERENCE PLANNING 203.740.5472	lmccarthy@4spe.org
Lauren McCarthy	TOPICAL CONFERENCE REGISTRATION 203.740.5472	lmccarthy@4spe.org
Barbara Spain	WEBINARS (Non Registration) 203.740.5418	bspain@4spe.org
Bonnie Kaczowski	WEBINARS REGISTRATION 203.740.5428	bakaczowski@4spe.org
Pedro Matos	WEBSITE ADMINISTRATION 203.740.5438	pmatoss@4spe.org
Dan Domoff	SUBMISSION OF EDITORIAL MATERIAL FOR PLASTICS ENGINEERING; QUESTIONS REGARDING SPE JOURNALS 203-740-5429	djdomoff@4spe.org

Upper Midwest Section Board of Directors 2012 - 2013

PRESIDENT
Dan Mishek
 Vista Technologies
 380 Oak Grove Pkwy, Suite 100
 Vadnais Heights, MN 55127
 651-653-0400
 dan@vistatek.com

PAST PRESIDENT
Richard C. Bopp
 NatureWorks LLC
 15305 Minnetonka Blvd.
 Minnetonka, MN 55345
 952-562-3314
 952-562-3462 FAX
 richard_c_bopp@natureworksllc.com

ADVERTISING CHAIR
Bill Priedeman
 405 S. Willow Drive
 Long Lake, MN 55356
 612-850-8987
 bpriedeman@aol.com

TREASURER
Marv Grussing
 7-SIGMA
 4832 Winterset Drive
 Minnetonka, MN 55343
 612/252-6242 W
 952/933-8008 H
 612/252-6292 FAX
 Office: mgrussing@7-sigma.com
 Home: mmgrussing@comcast.net

**INTL. COUNCILOR/
 EDUCATION CO-CHAIR**
Paul Rothweiler
 Aspen Research Corp.
 8401 Jefferson Highway
 Maple Grove, MN 55369
 651-842-6100
 651-842-6199 FAX
 paul.rothweiler@aspenresearch.com

**SECTION AMBASSADOR
 AWARDS CO-CHAIR**
Dave Erickson
 13502 Essex Court
 Eden Prairie, MN 55347
 952/937-0960
 952/829-5966 FAX

SPECIAL EVENTS CHAIR
Eric Swensied
 Harbor Plastics, Inc.
 1470 County Road 90
 Maple Plain, MN 55369
 763-479-4772
 763-479-4776 FAX
 erics@harbor-plastics.com

MEMBERSHIP CHAIR
Mahin Shahlari
 4201 Woodland Road
 P.O. Box 69
 Circle Pines, MN 55014
 P: 913-544-9800
 mshahlari@ntic.com

**NEWSLETTER/
 ONLINE EDITOR**
Rolly Enderes
 ChemCeed, Corp.
 2252 Olson Drive
 Chippewa Falls, WI 54729
 715-726-2300
 715-726-2314 FAX
 rolly@chemceed.com
 www.chemceed.com

SECRETARY
Shilpa Manjure
 Northern Technologies International
 Corp.
 4201 Woodland Road
 P.O. Box 69
 Circle Pines, MN 55014
 763-225-6600
 763-225-6645 FAX
 smanjure@ntic.com

EDUCATION CO-CHAIR
Thomas McNamara
 Thermotech
 1202 S. Fifth Street
 Hopkins, MN 55343
 952-933-9438
 952-933-9499 FAX
 thomas.mcnamara@thermotech.com

AWARDS CO-CHAIR
LuVerne (Verne) Erickson
 Clariant Corporation
 9101 International Parkway
 Minneapolis, MN 55428
 763-971-6143
 763-971-6133 FAX
 verne.erickson@clariant.com

BOARD MEMBER
Eric Cybulski
 3M
 BLDG 235-3F-08
 P: 651-737-4584
 ecybulski@mmm.com

BOARD MEMBER
Matt Havekost
 Advanced Technology Systems
 255 Roselawn Ave E, Ste 45
 St. Paul, MN 55117
 Office: 651-489-6990
 Cell: 952-484-7436
 mhavekost@advtek.com

CALENDAR OF EVENTS

- MEGATECH.....November 12, 2013
- HOLIDAY EVENT.....January, 2014
- ANTEC.....April 28 - 30, 2014



**SOCIETY OF
 PLASTICS ENGINEERS**

Upper Midwest Section
 Mahin Shahlari
 P.O. Box 69, Circle Pines, MN 55014

FORWARDING SERVICE REQUESTED

PRESORTED
 FIRST CLASS MAIL
 U.S. POSTAGE PAID
 MPLS., MN
 Permit No. 1024